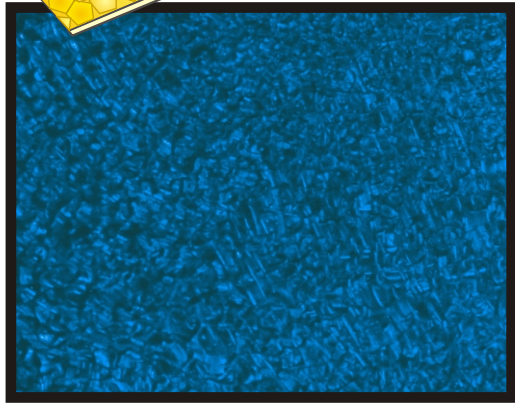


# THE 2 STEP HONEYCOMB STIPPLER



## HONEYCOMB

1. Apply a base coat ... we chose dark blue ... & allow to dry.
2. Load the Honeycomb Stippler with your second colour ... we used light blue ... apply the paint using a light random dabbing action.
3. If you think you have been heavy handed with the second colour ... just let it dry & go back over it with the base colour, that will tone it down again.

## 2 TONE HONEYCOMB

1. Apply a base coat ... we chose mustard ... & allow to dry.
2. Load the Honeycomb Stippler with your second colour ... don't overload it ... we used a deep ochre ... apply the paint with a light random dabbing action.
3. When the second colour has dried ... load the Honeycomb Stippler with your third colour ... we used metallic gold & repeat Step 2.

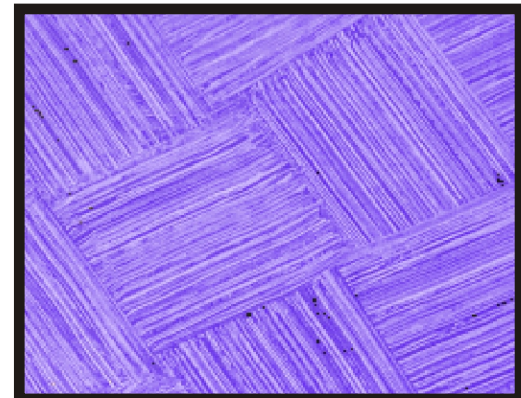


## FINE DISTRESSING

1. Apply a base coat ... we chose white ... & allow to dry.
  2. Apply a second colour ... we used burgandy ... this you work with while it's wet ... so on large areas do about 1 sq. metre at a time.
  3. Use a very light random twisting action to take part of the top coat off to reveal the base colour.
- \* 1 person must do the the top coat to maintain constancy\*

## BASKETWEAVE

1. Apply a base coat ... we chose white ... & allow to dry.
2. Apply a coat of you second colour ... we used a mid blue ... this you work with while it's wet ... so on large areas do about 1 sq. metre at a time.
3. Go back over the wet paint with the Honeycomb Stippler using a criss cross motion to achieve the basketweave effect. The size of the pad is the size of the weave.



*One pad does the lot ... and so much more ...*

# HONEYCOMB STIPPLER

*Simply choose the size you need to fit your Easi-Paint handles.*