

THE 2 STEP HONEYCOMB STIPPLER

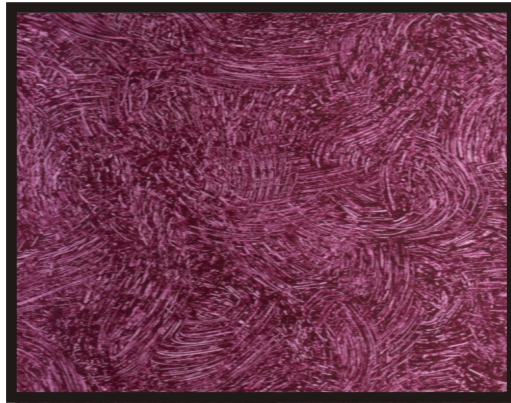


HONEYCOMB

1. Apply a base coat ... we chose dark blue ... & allow to dry.
2. Load the Honeycomb Stippler with your second colour ... we used light blue ... apply the paint using a light random dabbing action.
3. If you think you have been heavy handed with the second colour ... just let it dry & go back over it with the base colour, that will tone it down again.

2 TONE HONEYCOMB

1. Apply a base coat ... we chose mustard ... & allow to dry.
2. Load the Honeycomb Stippler with your second colour ... don't overload it ... we used a deep ochre ... apply the paint with a light random dabbing action.
3. When the second colour has dried ... load the Honeycomb Stippler with your third colour ... we used metallic gold & repeat Step 2.

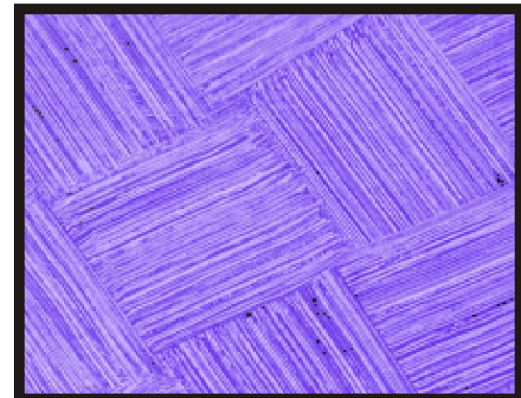


FINE DISTRESSING

1. Apply a base coat ... we chose white ... & allow to dry.
 2. Apply a second colour ... we used burgandy ... this you work with while it's wet ... so on large areas do about 1 sq. metre at a time.
 3. Use a very light random twisting action to take part of the top coat off to reveal the base colour.
- * 1 person must do the the top coat to maintain constancy*

BASKETWEAVE

1. Apply a base coat ... we chose white ... & allow to dry.
2. Apply a coat of you second colour ... we used a mid blue ... this you work with while it's wet ... so on large areas do about 1 sq. metre at a time.
3. Go back over the wet paint with the Honeycomb Stippler using a criss cross motion to achieve the basketweave effect. The size of the pad is the size of the weave.



One pad does the lot ... and so much more ...

HONEYCOMB STIPPLER

Simply choose the size you need to fit your Easi-Paint handles.